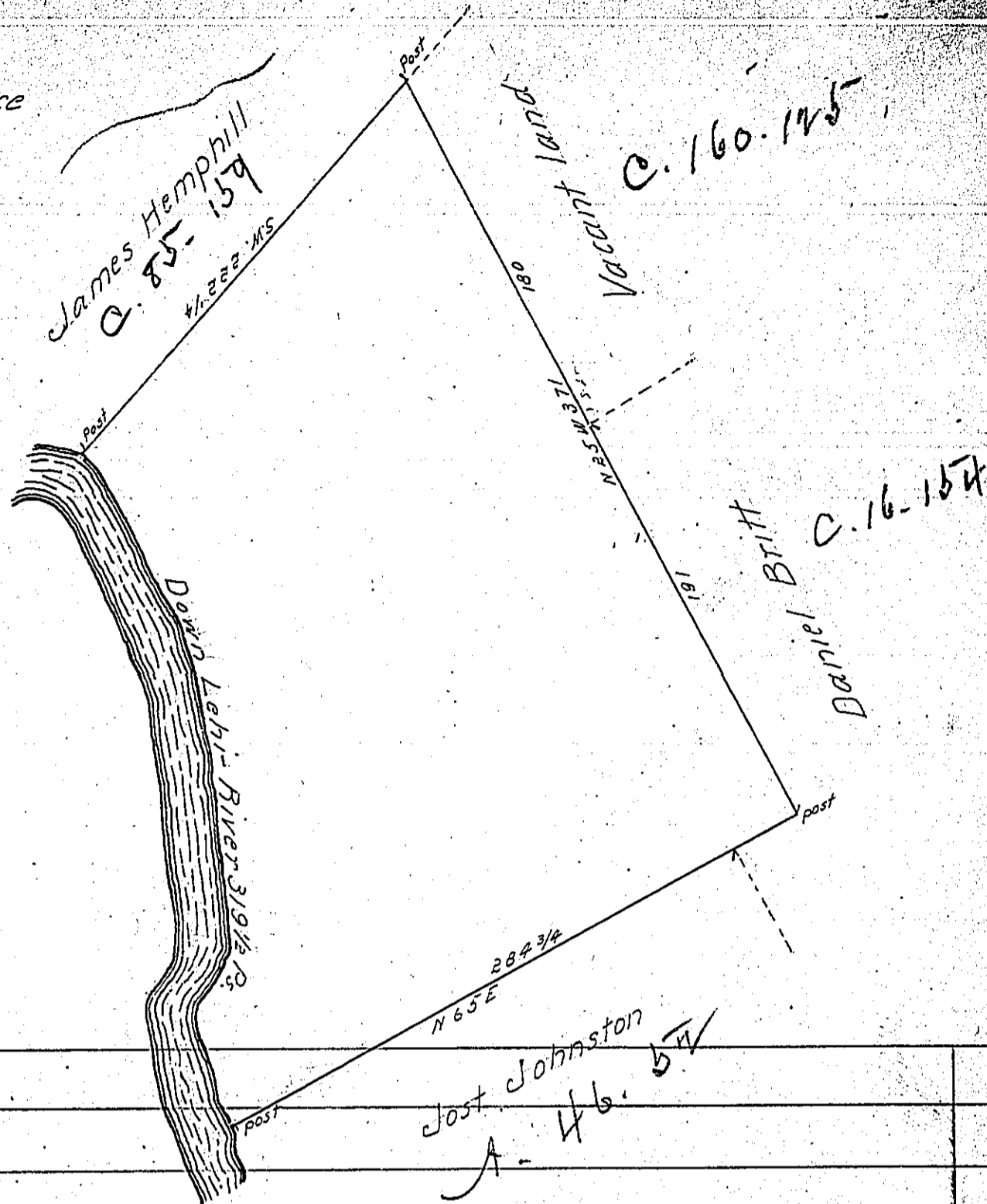


Bearing & distance
 down Lehi-River
 1. S 50 E 11 1/2
 2. S 25 E 80
 3. S 1 E 140
 4. S 35 W 32
 5. S 15 E 56
 319 1/2



By virtue of a Warrant dated the 4th April 1792 Surveyed the 20th April 1793 to Peter Curtz the above described tract of land Situate on the East Side of Lehi in the pine Swamp in Northampton County Containing four hundred and forty eight Acres three quarters and the allowance of Six P Cent &c^a

P. Geo. Palmer D.S.

To Daniel Brodhead Esq^r }
 Survey^r General }

IN TESTIMONY that the above is a copy of the original remaining on file in the Department of Internal Affairs of Pennsylvania, made conformably to an Act of Assembly approved the 16th day of February, 1833, I have hereunto set my Hand and caused the Seal of said Department to be affixed at Harrisburg, this first day of March 1904

George D. ...
 Secretary of Internal Affairs.